



QUICK START

POLY EDGE B10, B20 & B30



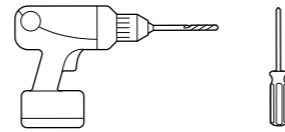
www.poly.com/setup/edge-b

MANAGEMENT SOFTWARE

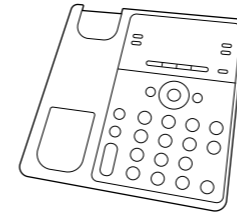
POLY LENS

lens.poly.com

TOOLS FOR WALL MOUNT



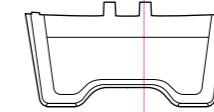
CONTENTS



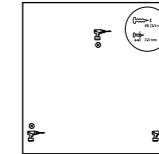
Console



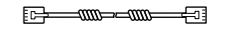
Handset



Desk Stand



Wallmount Template



Handset Cord

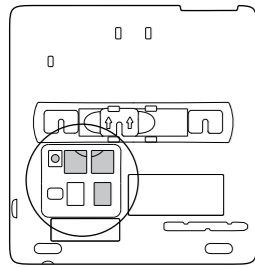


Network Cable

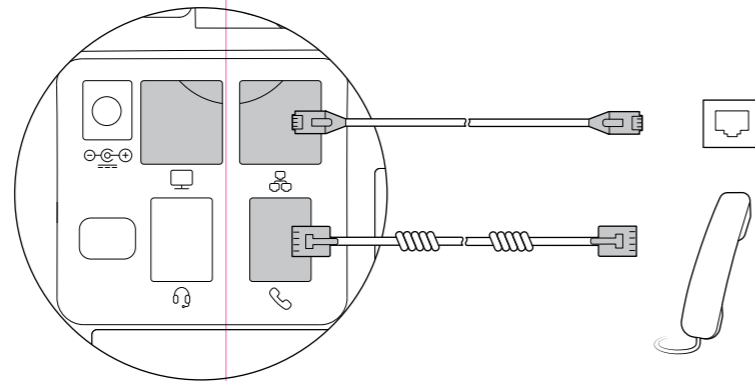


AC Power Adapter
(included with Edge B10;
optional for Edge B20 & Edge B30)

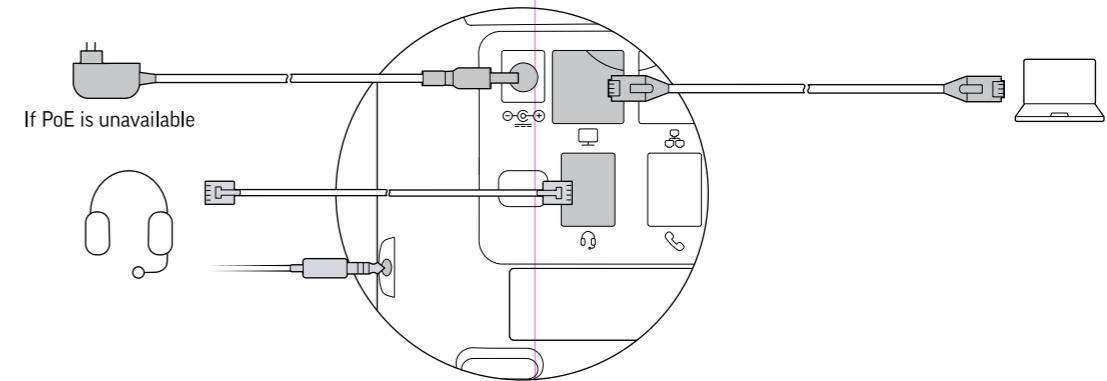
REQUIRED



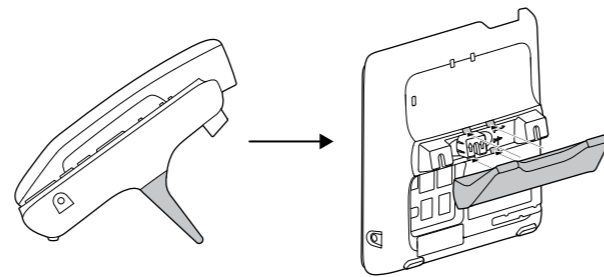
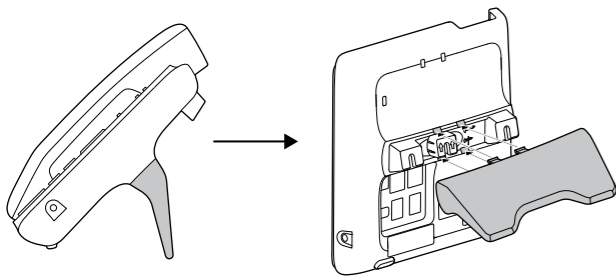
Poly Edge B10 requires a power supply.



OPTIONAL



DESK



www.poly.com/setup/edge-b

UKCA

UK representative: Plantronics Ltd, Building 4, Foundation Park,
Cannon Lane, Part 1st Floor, Maidenhead, SL6 3UD

© 2021 Poly. All trademarks are the property of their respective owners.



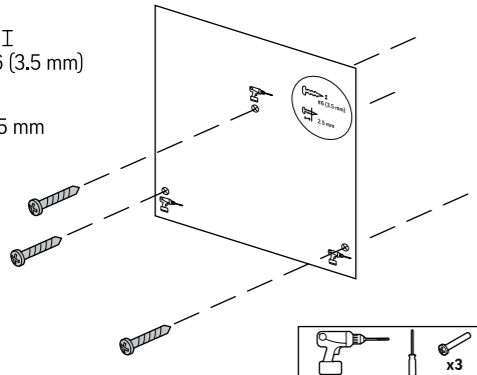
Recyclable where facilities exist



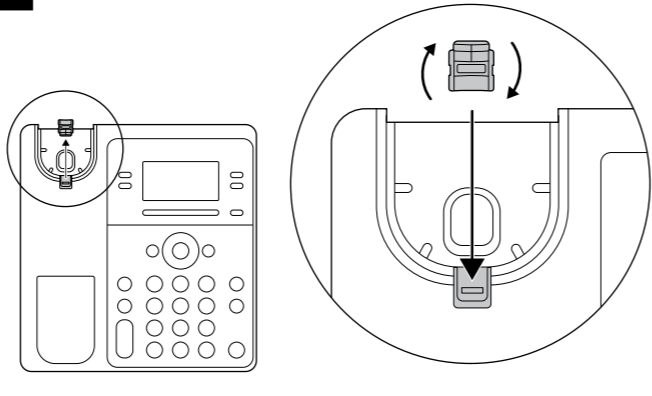
1725-49810-001D 12.21

WALL MOUNT 1

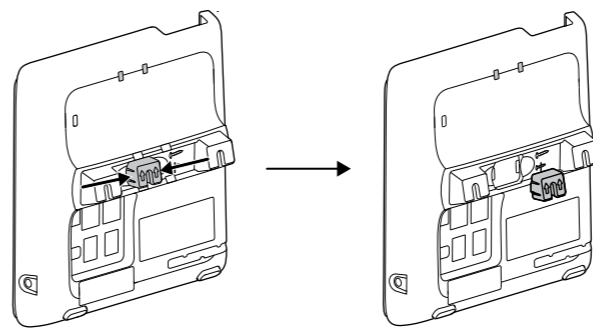
I
#6 (3.5 mm)
2.5 mm



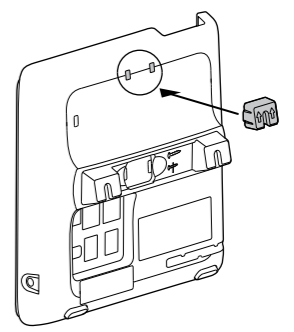
2



3



4



5

